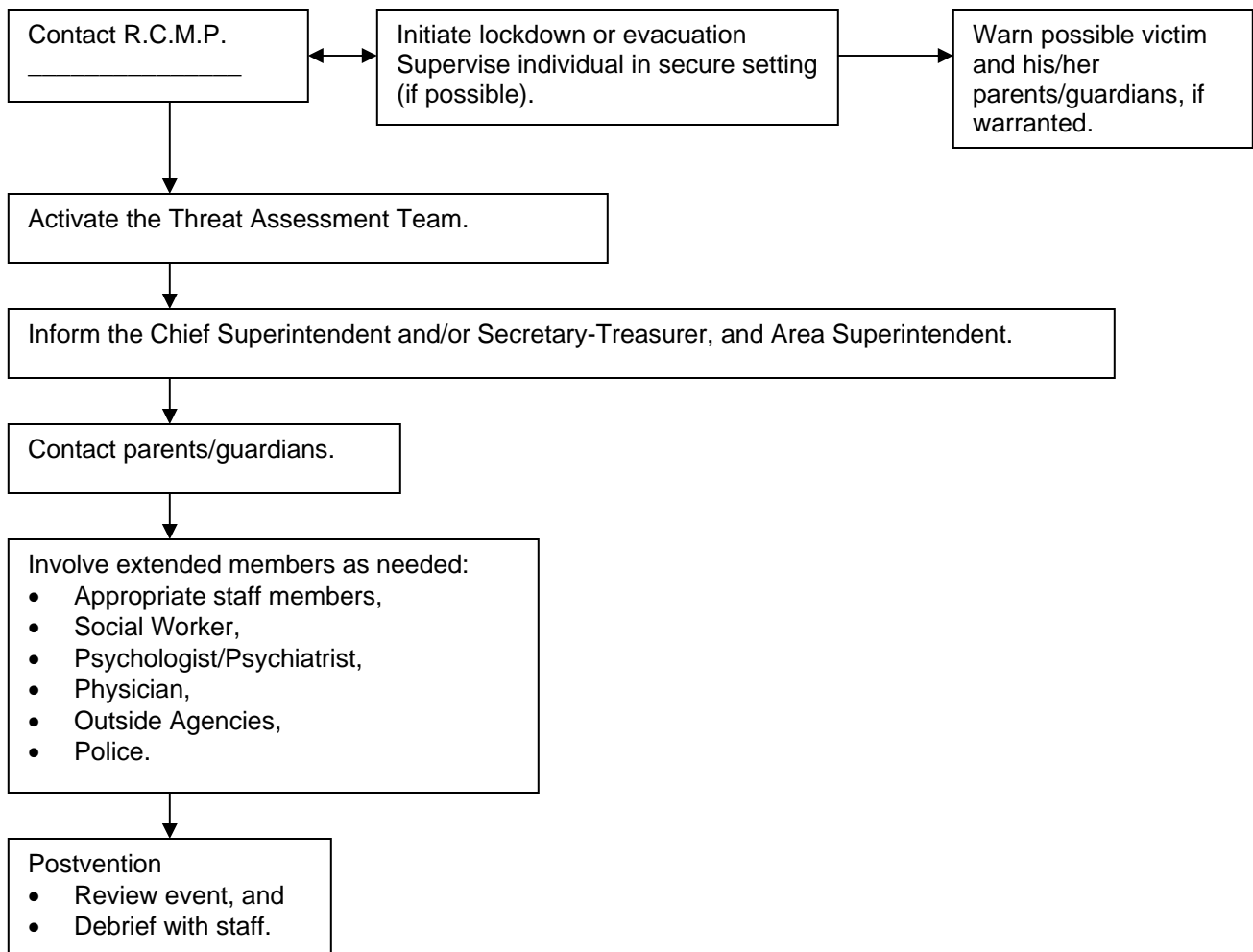




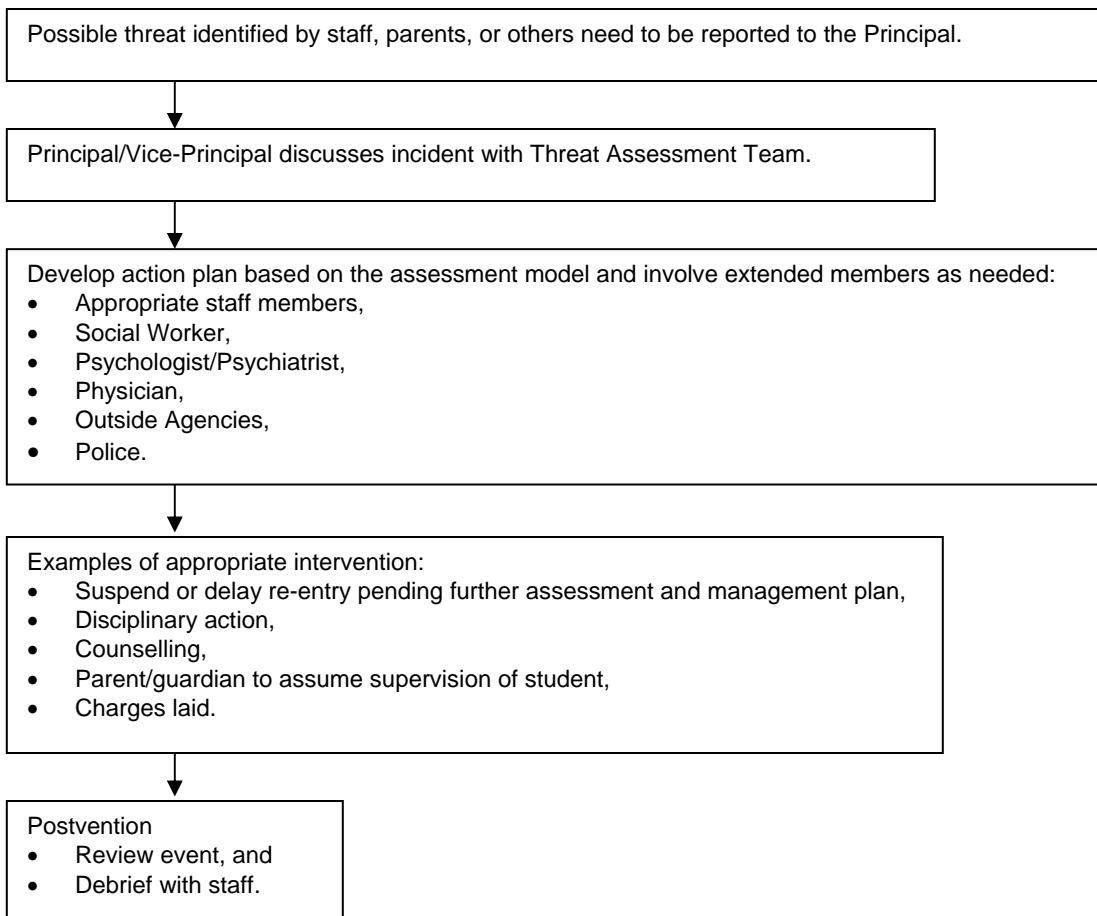
IMMEDIATE RISK (HIGH) PROTOCOL

1. Immediate risk procedures require immediate police intervention.
2. The school Principal or designate shall contact the police (R.C.M.P.) immediately and take steps to ensure the safety of everyone in the school by activating its emergency response plan such as an evacuation or school lockdown.
3. The Principal shall activate the Threat Assessment Team.



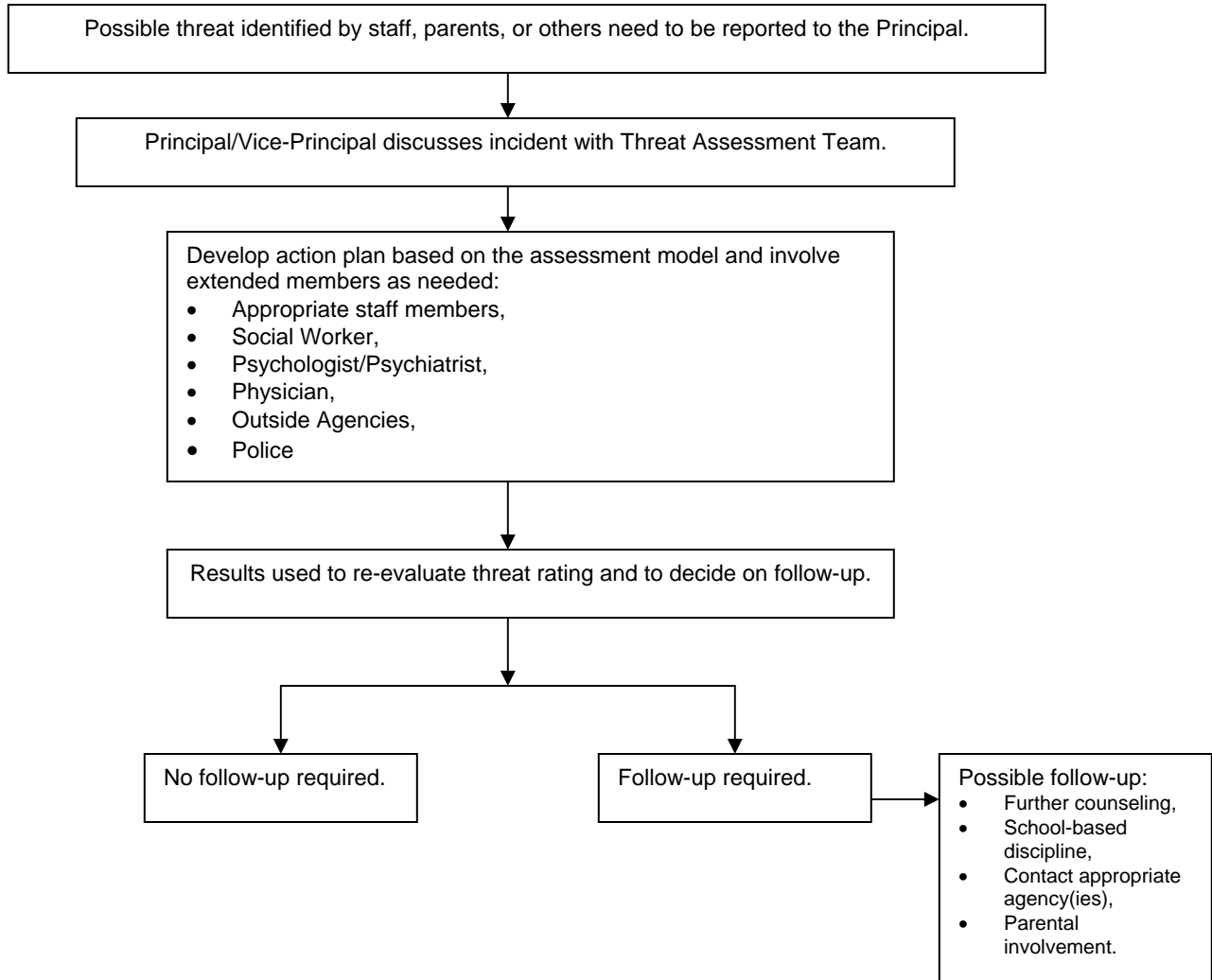
Student Behaviours with a Risk for Violence (MEDIUM) PROTOCOL

1. The Principal shall initiate the protocol for response upon receiving a report of medium-risk behaviour.
2. In cases where a Criminal Code violation has occurred, the R.C.M.P. representative of the Threat Assessment Team will advise as to whether charges should be laid.
3. If charges are not laid, the Threat Assessment Team will conduct a risk assessment and determine follow-up recommendations.
4. The Principal shall notify the parent(s) of the student(s) who is making the threat as soon as possible as well as parents of those students against whom the threat was made.
5. The Threat Assessment Team shall guide the process from initial assessment, to planning interventions to decrease risk, to plans for re-entry to school where a suspension has occurred.
6. The Threat Assessment Team shall review the incident to ensure protocol was followed.



Worrisome Behaviours (LOW) PROTOCOL

1. Everyone has a duty to communicate worrisome behaviours to the Principal.
2. The Principal shall consult with the Threat Assessment Team as to whether the threat assessment needs to be conducted.
3. The R.C.M.P. may be consulted, but a formal complaint is not normally made at this stage.



Adopted September 1, 2009		
---------------------------	--	--